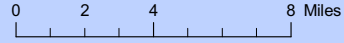
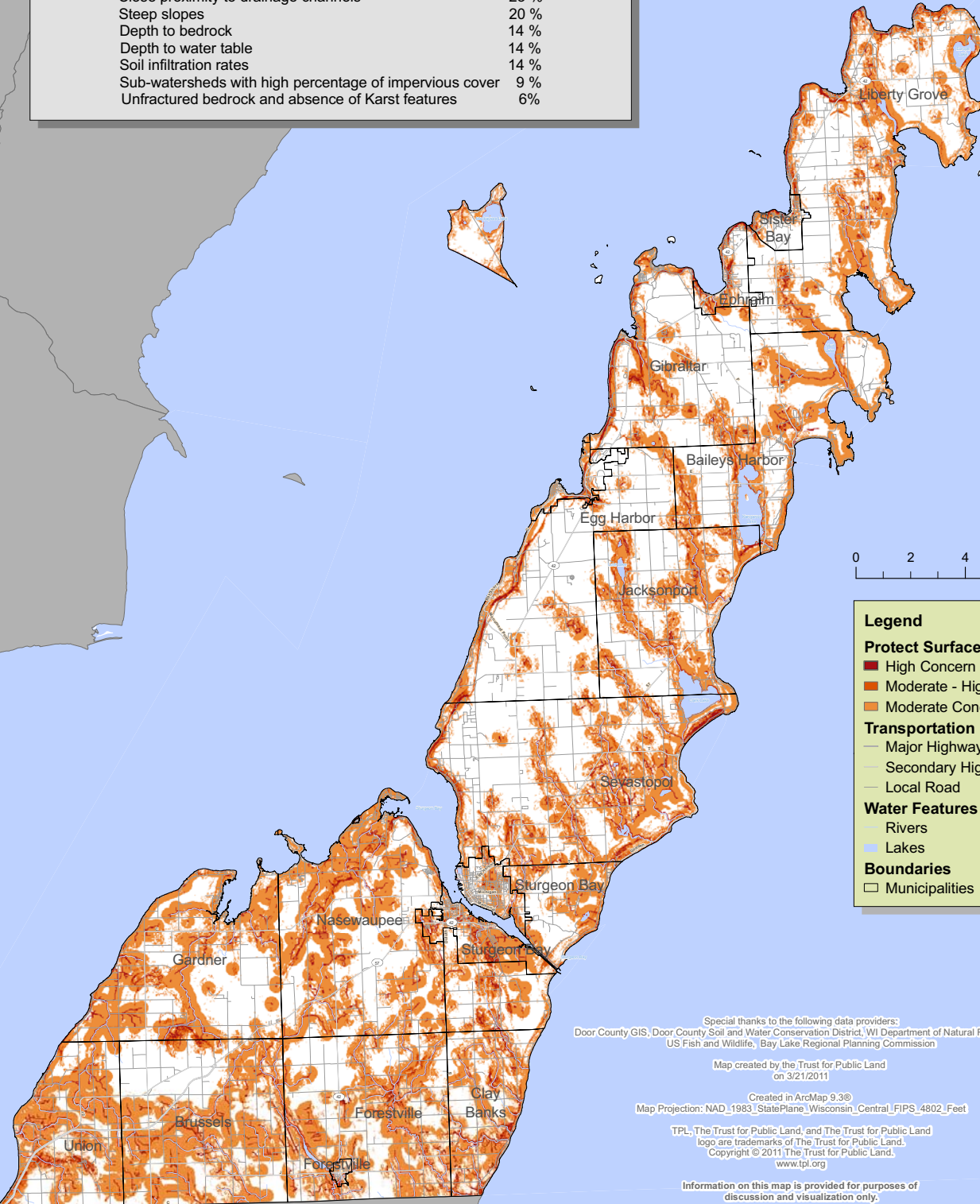
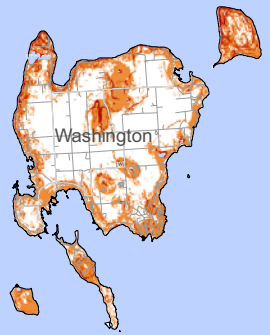


Door County Greenprint Goal: Protect Surface Water Quality

This map displays the results of the Protect Surface Water Quality, a conservation goal within the Door County Greenprint. The degree of priority for each area is represented with a color scale with dark red representing areas of highest concern and orange representing areas of moderate concern.

These priorities are the result of a weighted analysis on the following criteria:

Close proximity to drainage channels	23 %
Steep slopes	20 %
Depth to bedrock	14 %
Depth to water table	14 %
Soil infiltration rates	14 %
Sub-watersheds with high percentage of impervious cover	9 %
Unfractured bedrock and absence of Karst features	6 %



Legend

Protect Surface Water Quality - Priority Areas

- High Concern
- Moderate - High Concern
- Moderate Concern

Transportation

- Major Highway
- Secondary Highway
- Local Road

Water Features

- Rivers
- Lakes

Boundaries

- Municipalities

Special thanks to the following data providers:
Door County GIS; Door County Soil and Water Conservation District; WI Department of Natural Resources,
US Fish and Wildlife, Bay Lake Regional Planning Commission

Map created by the Trust for Public Land
on 3/21/2011

Created in ArcMap 9.3®
Map Projection: NAD_1983_StatePlane_Wisconsin_Central_FIPS_4802_Feet

TPL, The Trust for Public Land, and The Trust for Public Land
logo are trademarks of The Trust for Public Land.
Copyright © 2011 The Trust for Public Land.
www.tpl.org

Information on this map is provided for purposes of
discussion and visualization only.

